



# YELLOW RIVER WATER ~ TRAIL



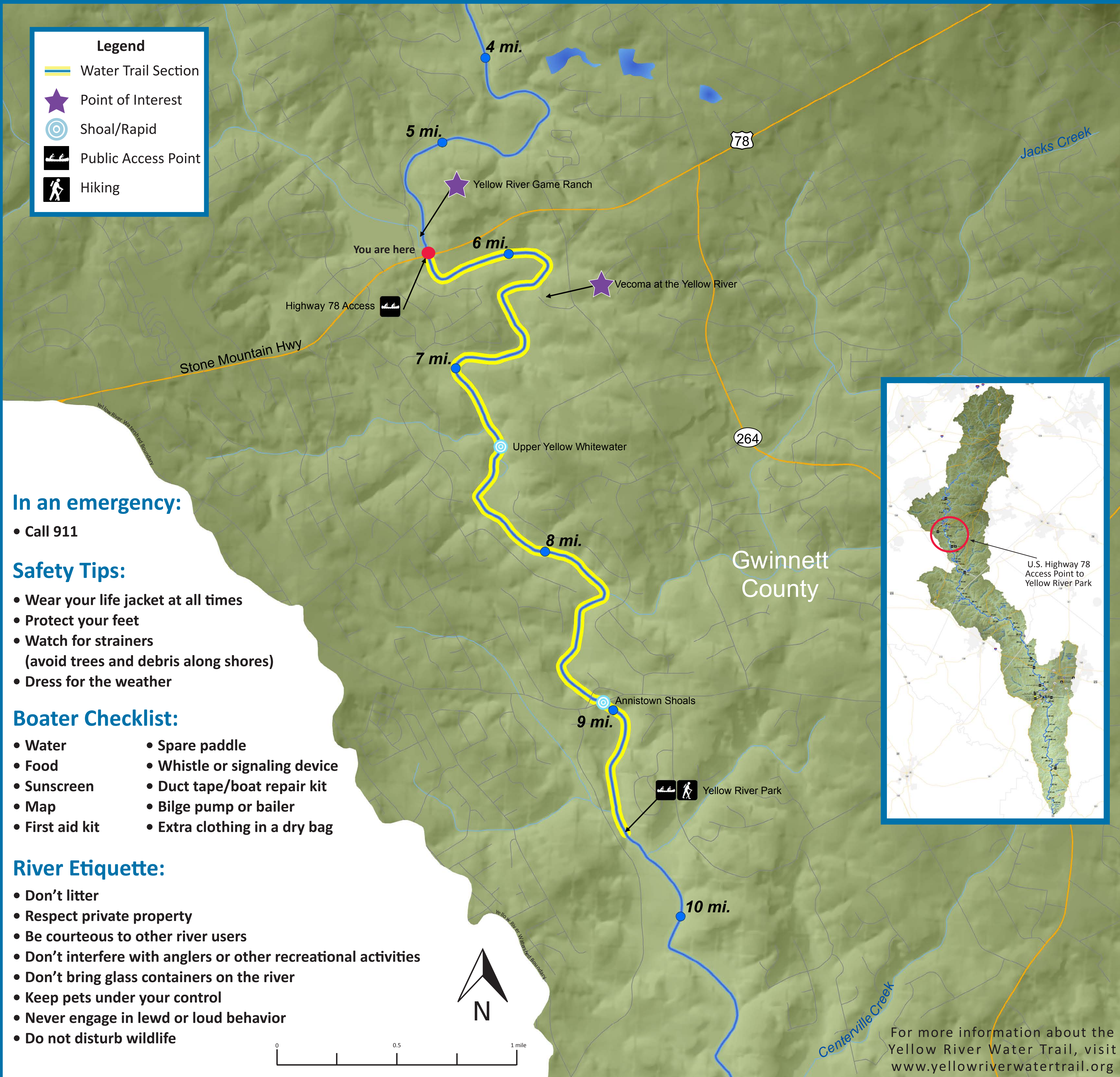
## U.S. HWY 78 ACCESS POINT

**Description:** This section is known for its Class II-III+ whitewater. Please check that the water levels on the USGS website for the GA-124 Lithonia Gauge are at a height of 3.4 feet to 5 feet, or 200 cubic feet per second (cfs) to 600 cfs for a good whitewater paddling experience. Before you reach the rapids you will pass the beautiful Vecoma event facility, where weddings and other events are hosted on the riverbank. Please be respectful when paddling by. The whitewater section starts with a couple drops of 4 feet and 3 feet, and fun stretches of class I & II rapids on the left side of an island. Between the whitewater sections are flowing flatwater. This suburban section of river weaves between neighborhoods, but normally the tree canopy is thick enough to obscure sight of homes. **Important!** Annistown Falls at Annistown Road Bridge should be portaged, and only experienced kayakers with protective gear should attempt the Falls, due to the large rock at the bottom of the stream flow. After the falls there are a couple hundred yards of fun class II whitewater. Approximately 300 yards downstream from Annistown Road Bridge is Yellow River Park. Take-out at the large low flat rocks. You will usually see families playing in the river here.

**Length:** 4 miles from Hwy 78  
Access to Yellow River Park  
Access

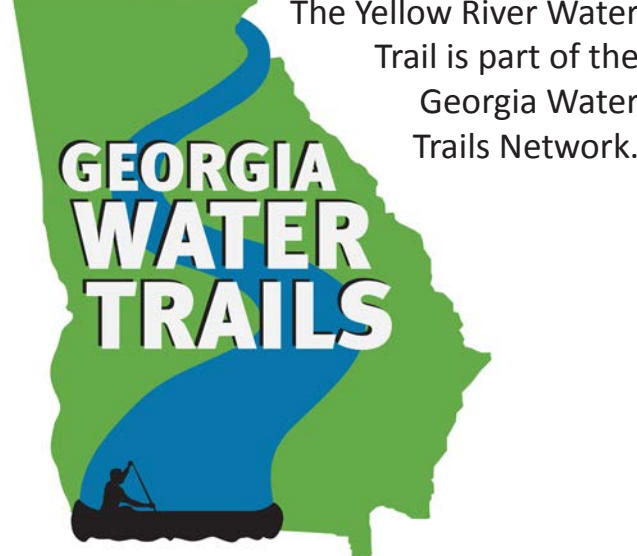
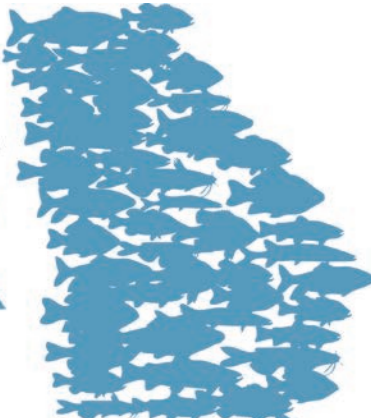
**Difficulty:** Class II-III+, suitable  
for intermediate to experienced  
whitewater paddlers

**Paddling Time:** 2-3 hours



The Yellow River Water Trail is made possible through the generous support of:

GEORGIA  
RIVER  
NETWORK



[www.gawatertrails.org](http://www.gawatertrails.org)

Additional support provided by:

